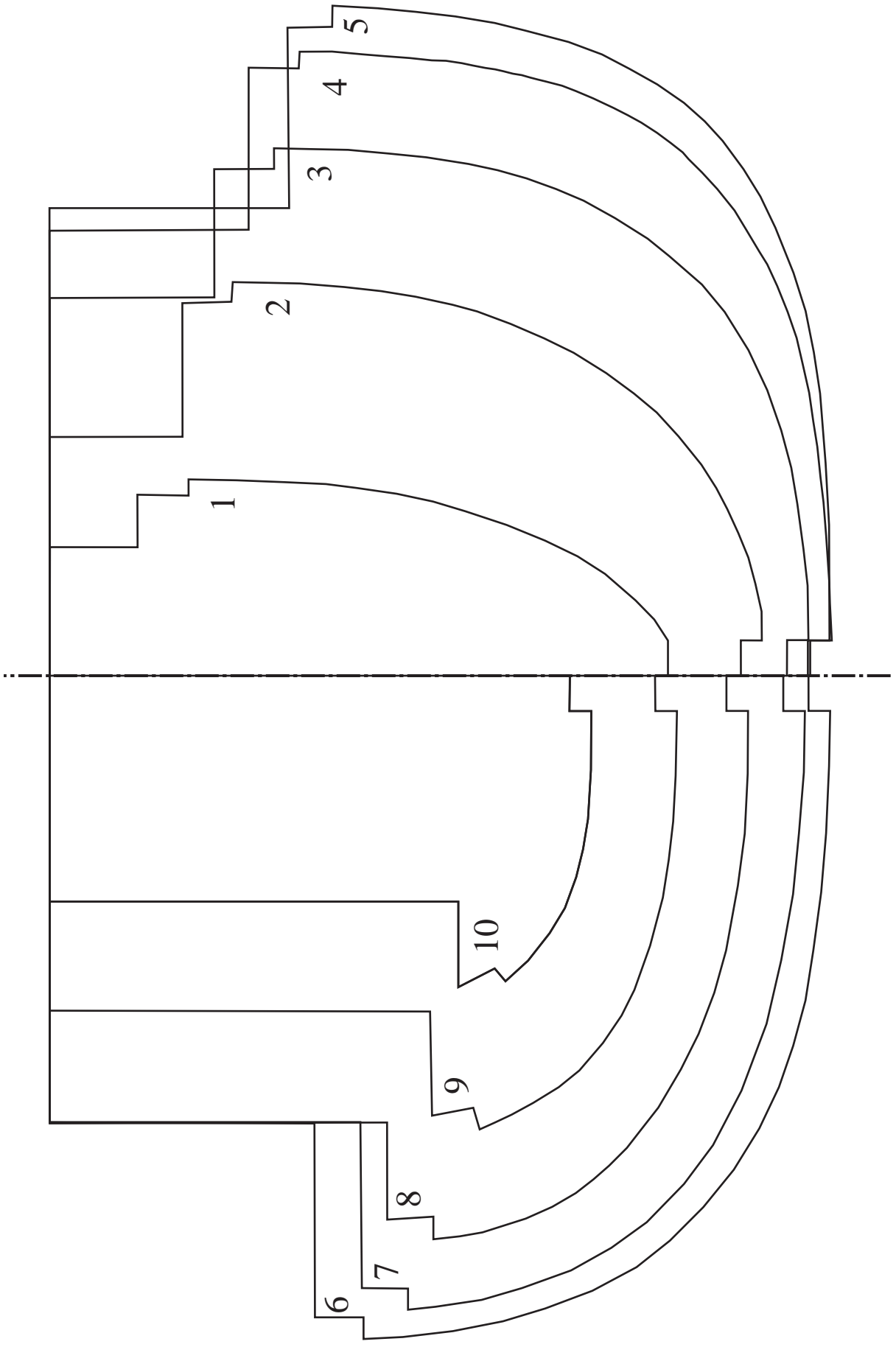
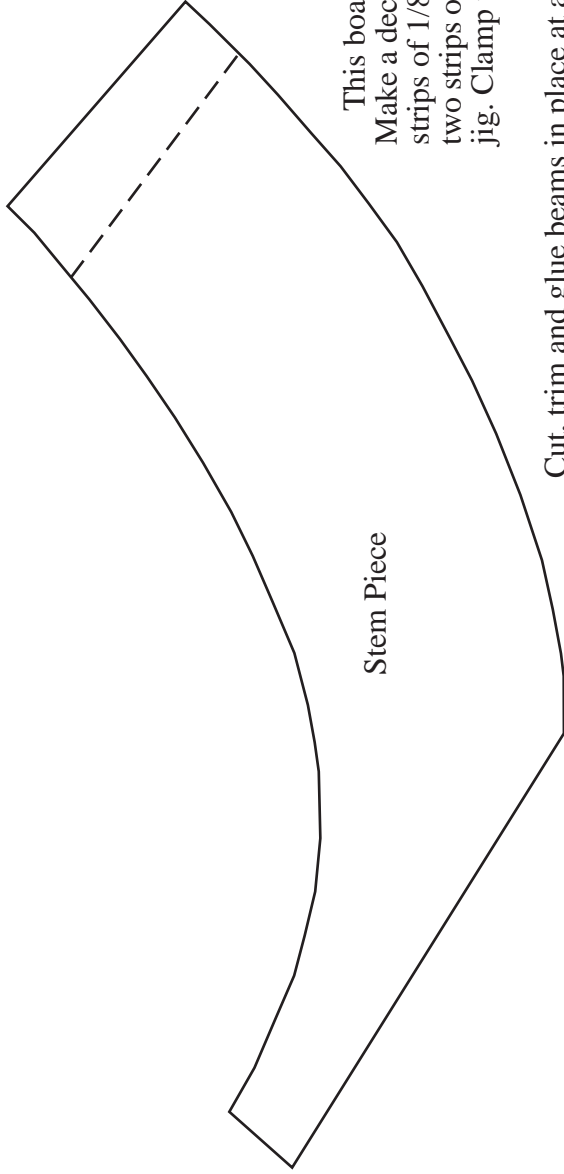


Swede Johnson's  
**"ORCO 2"**  
 U.S. One Meter

Swede Johnson's  
**ORCO 2**



Swede Johnson's  
**ORCO 2**



Stem Piece

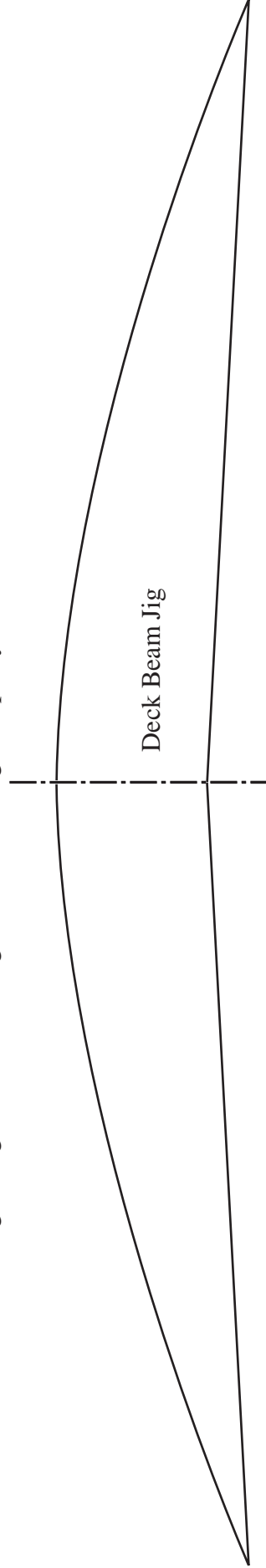
This boat has a rather high crown (curvature) to the deck. Make a deck beam jig from 3/4" thick scrap material. Rip 1/4" strips of 1/8" plywood (doorskin) across the grain. Lamininate two strips of plywood (5 Minute Epoxy) and place them on the jig. Clamp with rubber bands. Let glue set: Make 3 beams,

Cut, trim and glue beams in place at approximately stations #3, #4-1/2 (about 1-1/4" behind #4) and at #7. A 1/8" X 1/2" pine strip is fitted and glued under the deck beams. It runs from bow to transom. Fill in space between deck beams with scrap material. This reinforces the deck so it must be level with the top surface of the deck beams. Sand deck beams, clamps and center plank inserts, so the deck will make good contact with all surfaces.

Use 1/8" balsa wood for the decking. Make strips approximately 1" wide. Start with a plank down the center of the deck. Glue to deck beams, center plank, clamps and top edge of transom. Continue planking as you did the hull. Trim and sand deck.

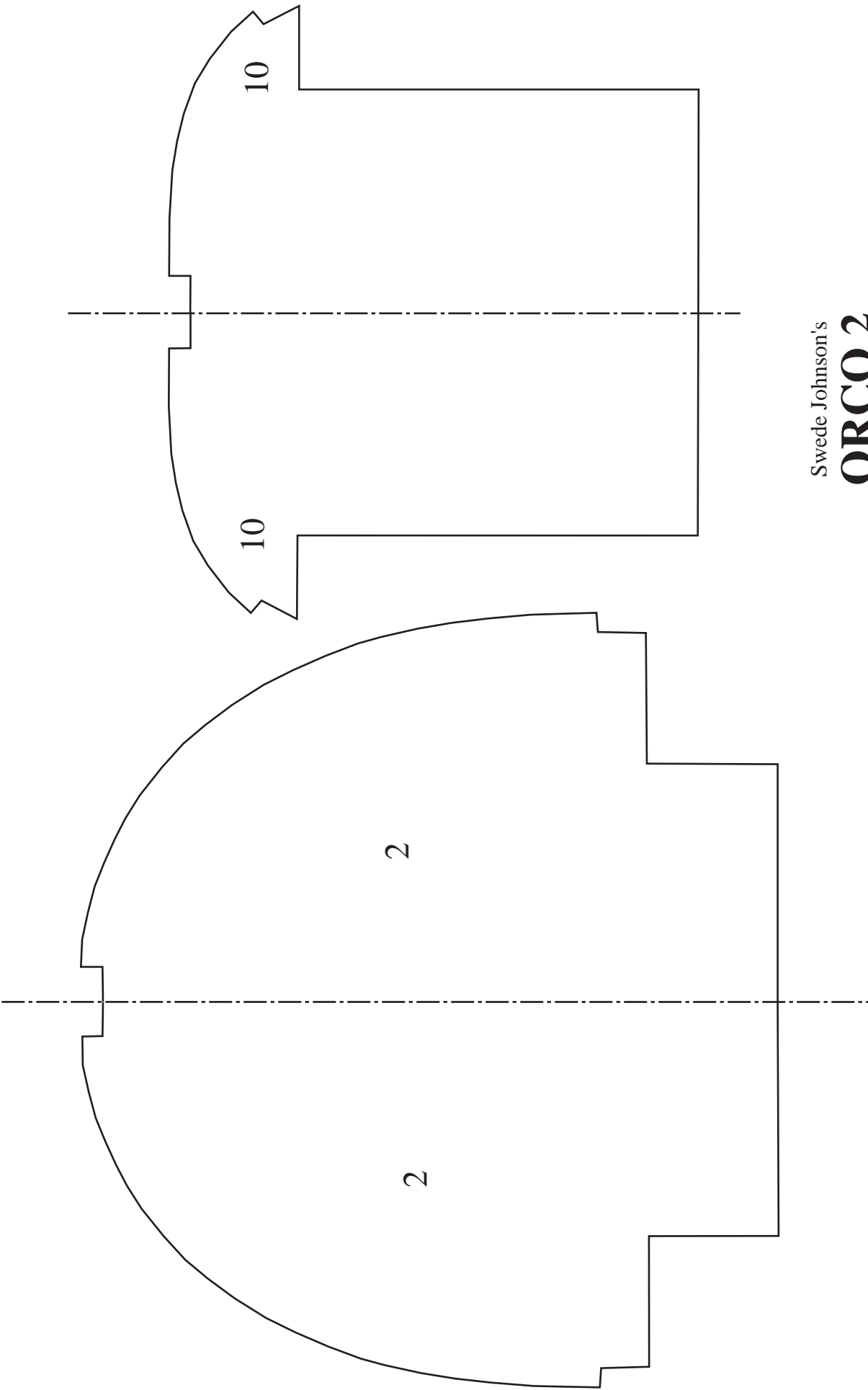
Cut opening in deck for a commercially available hatch ring or make one from strips of thin plywood. Remove the exposed length of center plank in hatch opening. Install hatch ring. Don't forget to waterproof the under side of deck and beams, A layer of glass cloth and 2 coats of resin should finish the deck.

The internal keel mounting arrangement, rudder log, fin, bulb and rig are up to you.



Deck Beam Jig

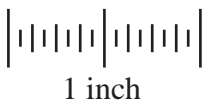
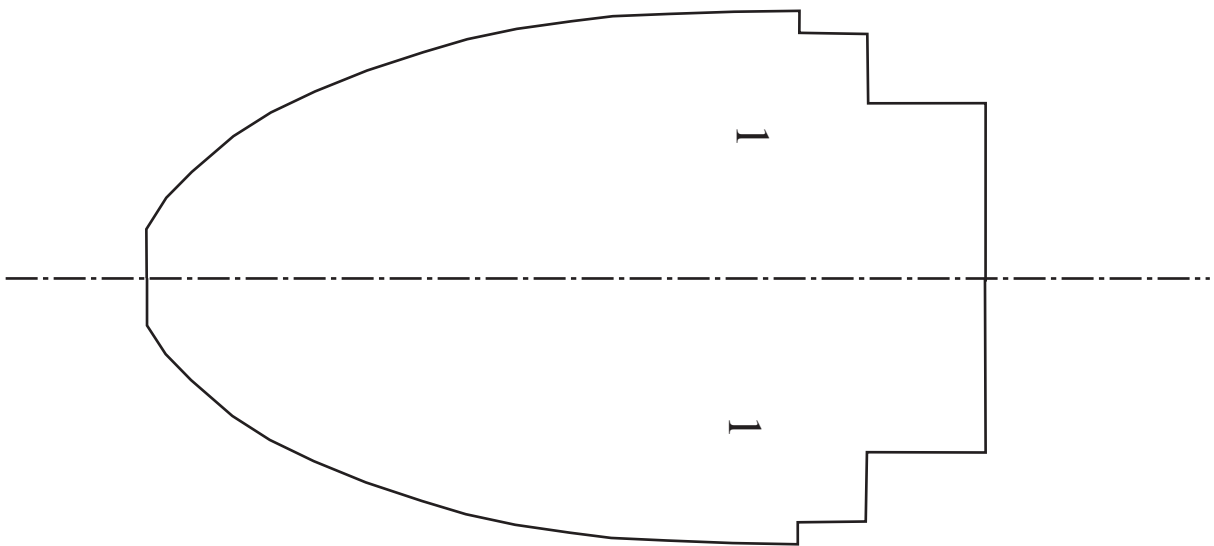
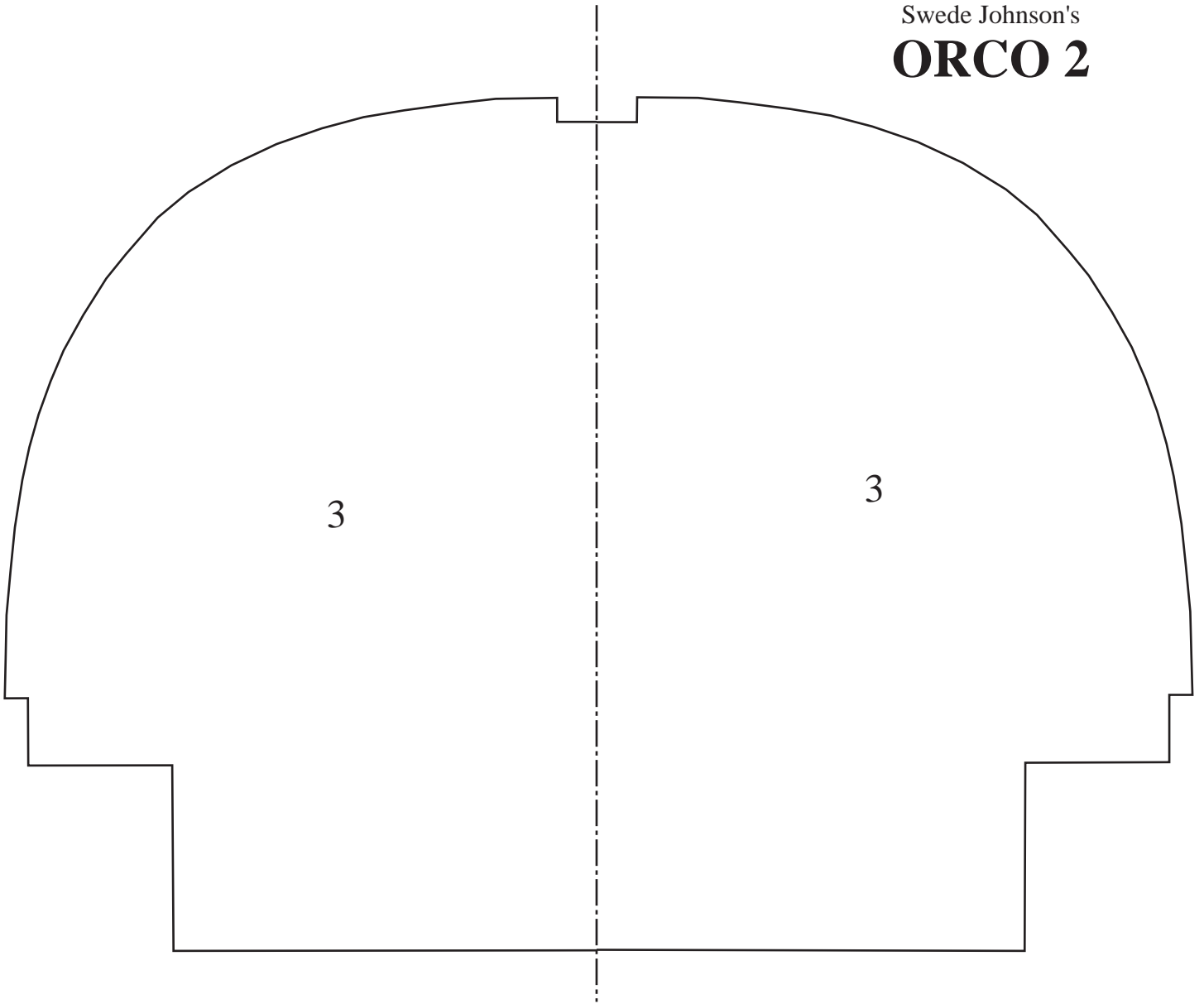




Swede Johnson's  
**ORCO 2**



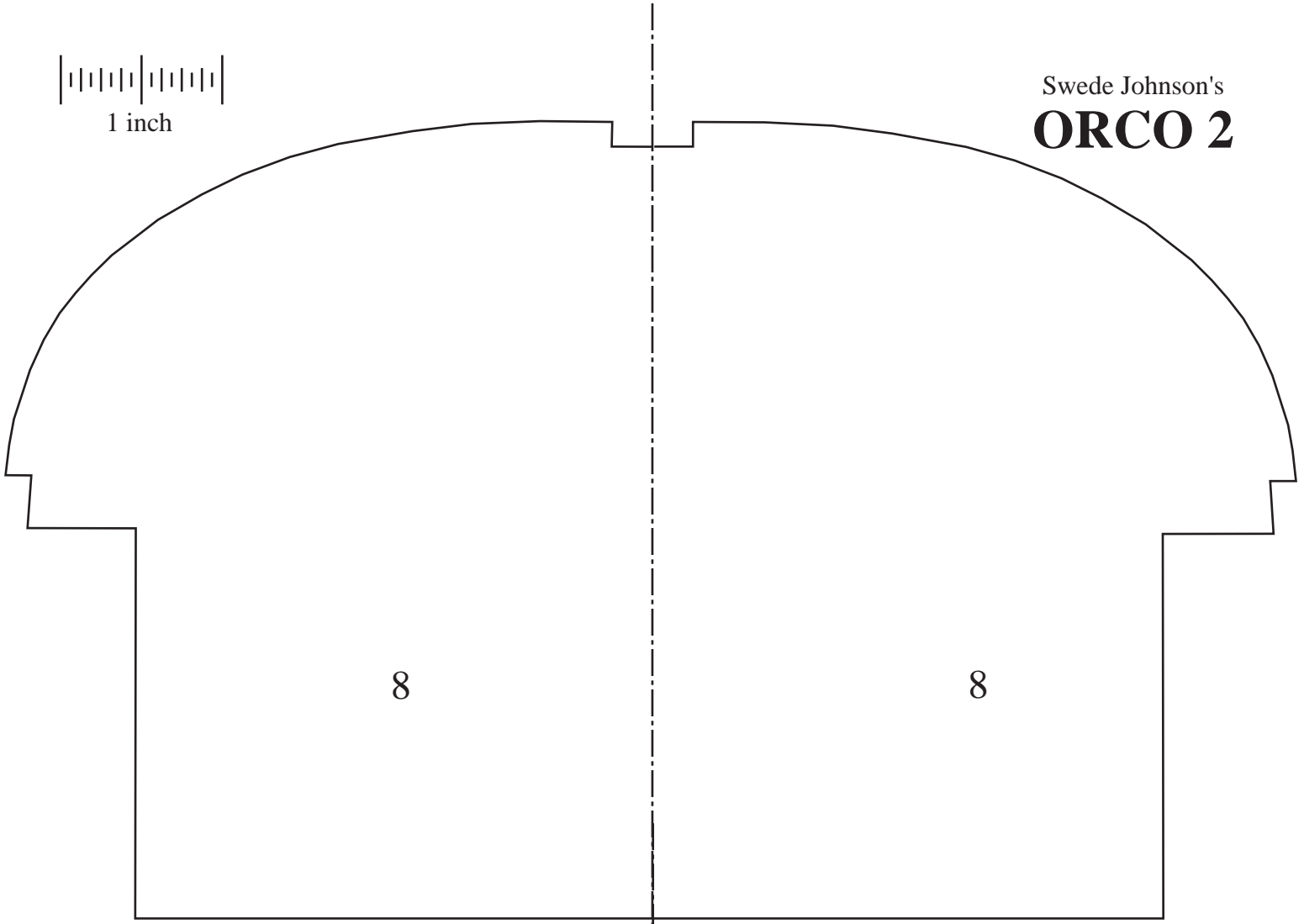
Swede Johnson's  
**ORCO 2**





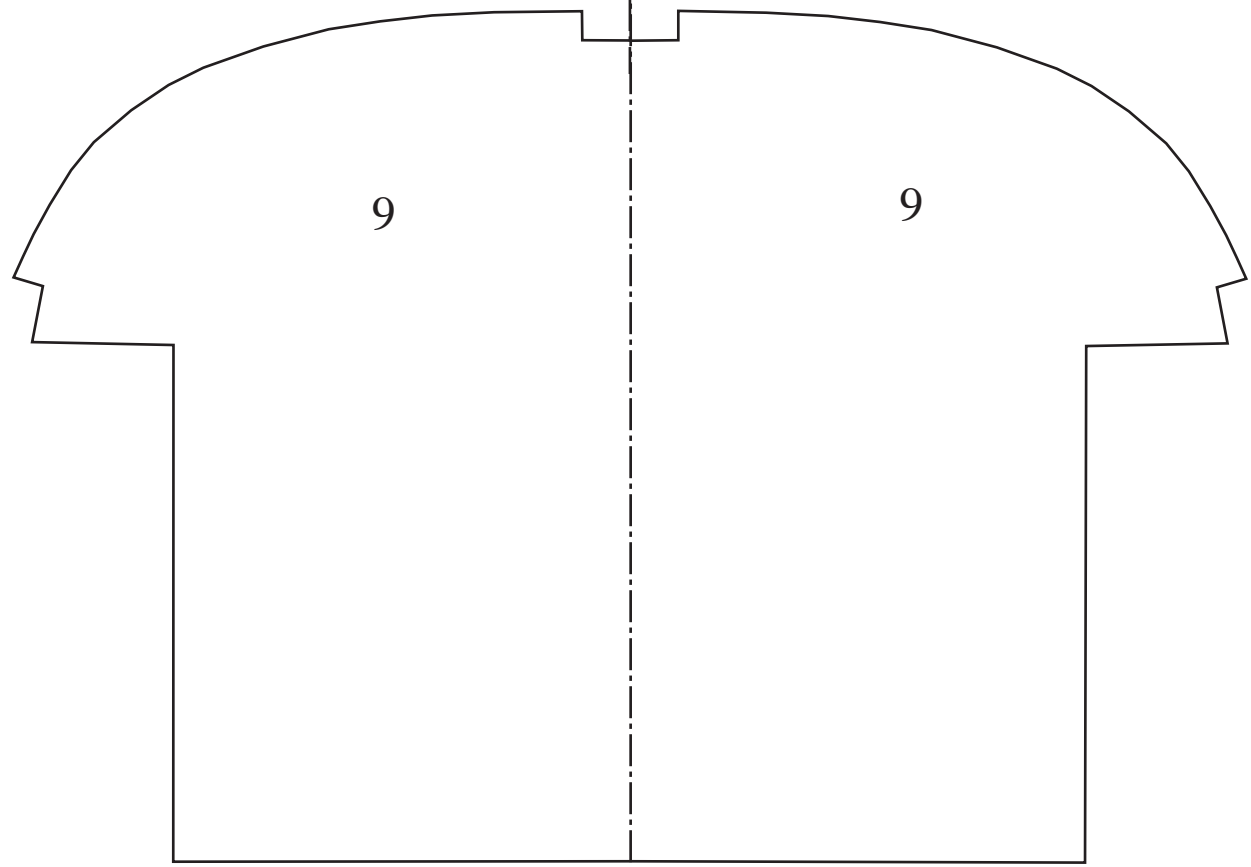
1 inch

Swede Johnson's  
**ORCO 2**



8

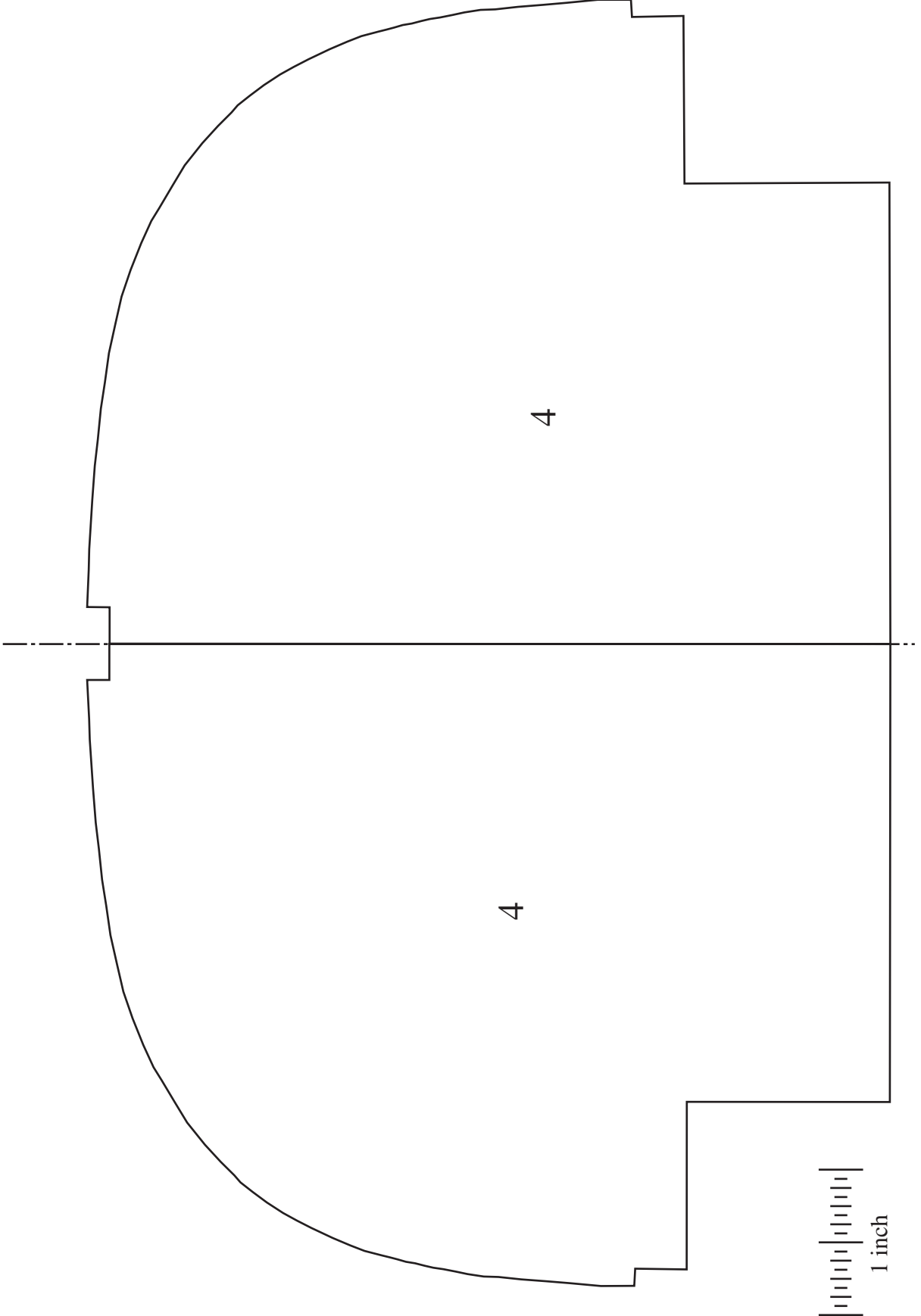
8



9

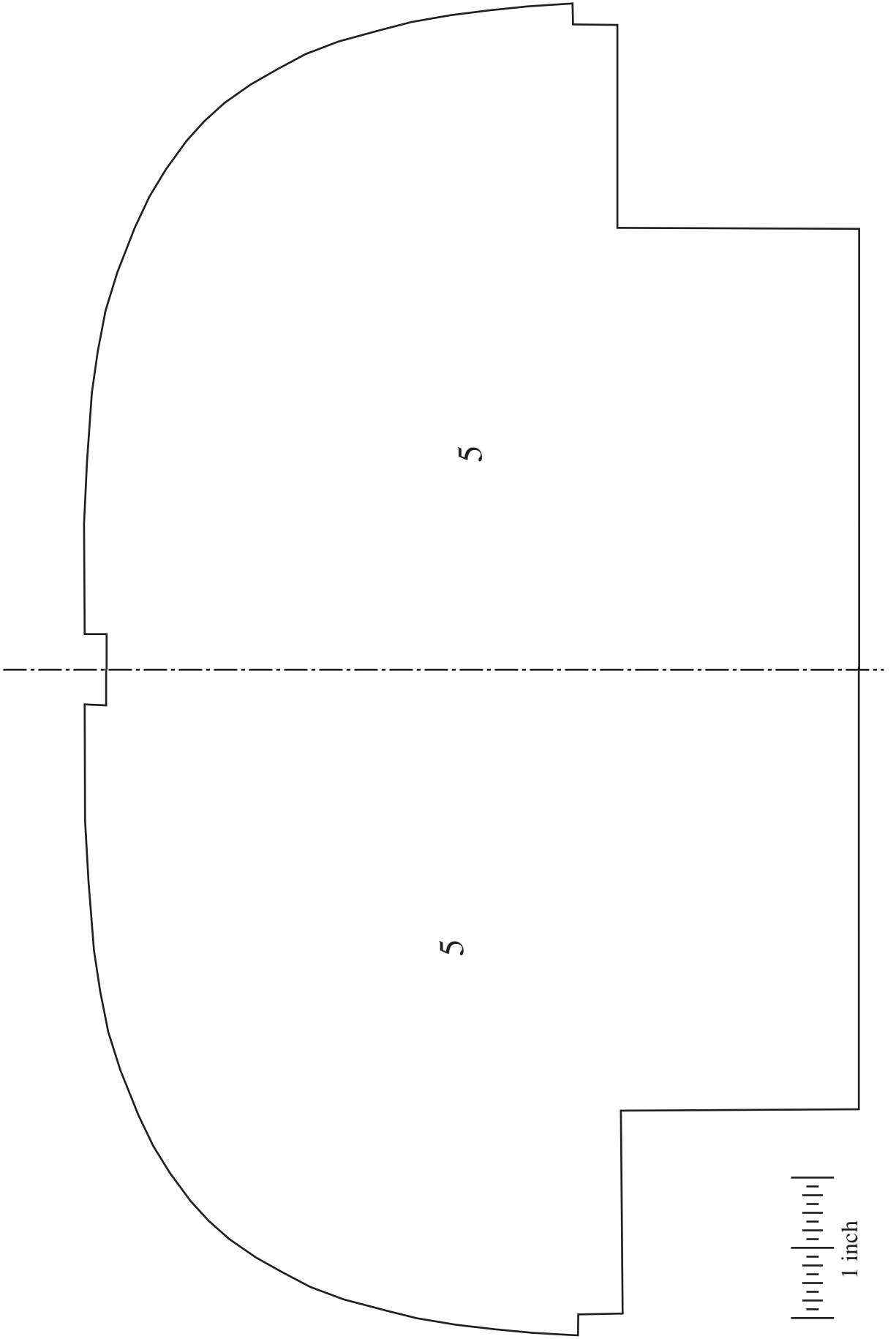
9

Swede Johnson's  
**ORCO 2**



1 inch

Swede Johnson's  
**ORCO 2**



1 inch

Swede Johnson's  
**ORCO 2**

