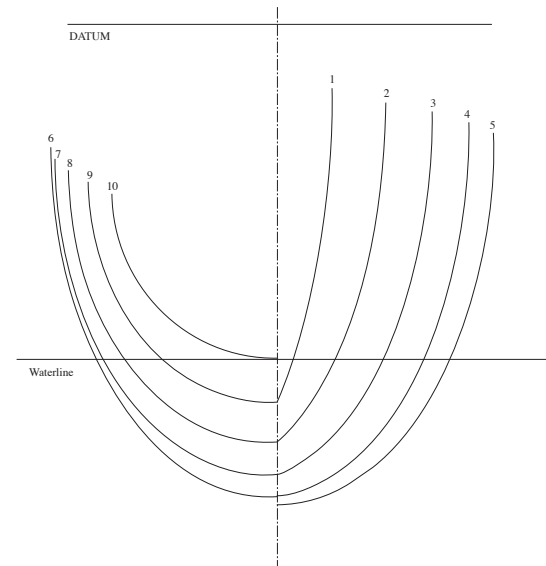


**ZIPPER III
US ONE METER
BY STEVE ANDRE**



The program that printed the diagrams does not insert the complete abbreviations for terms like LCF(lateral center of floatation), LCG(lateral center of gravity), VCM (vertical center of mass), CLR (center of lateral resistance), LCB(lateral center of bouyancy).

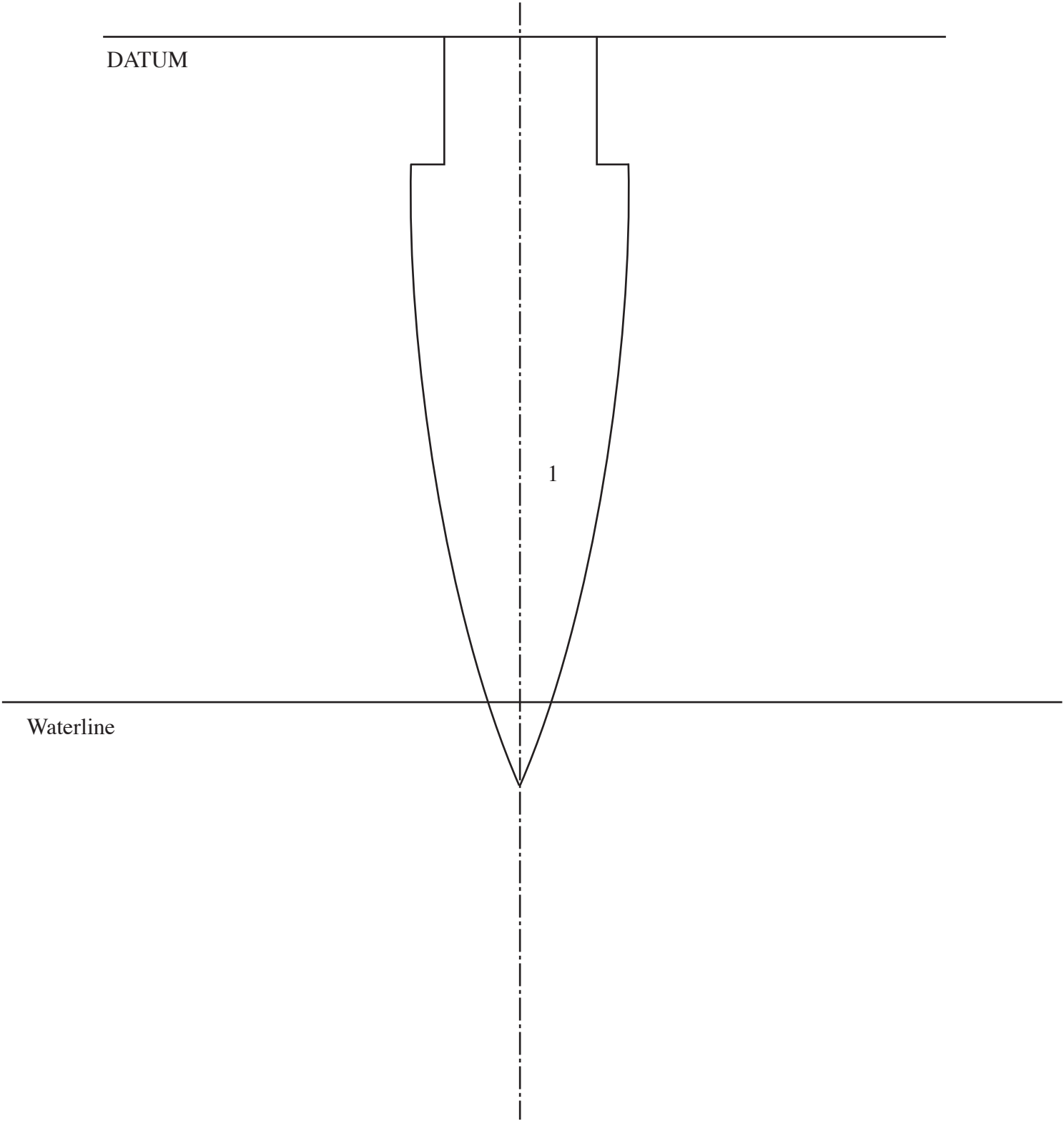
BG is actually a contraction of LCB (or CB) and LCG (or CG). The M of VCM (or CM) got left off.

So, the centers of mass of the hull(M), gravity(G), and bouyancy(B) on the Zipper III are all on the same line, the center of floatation (F) is slightly aft of these three.

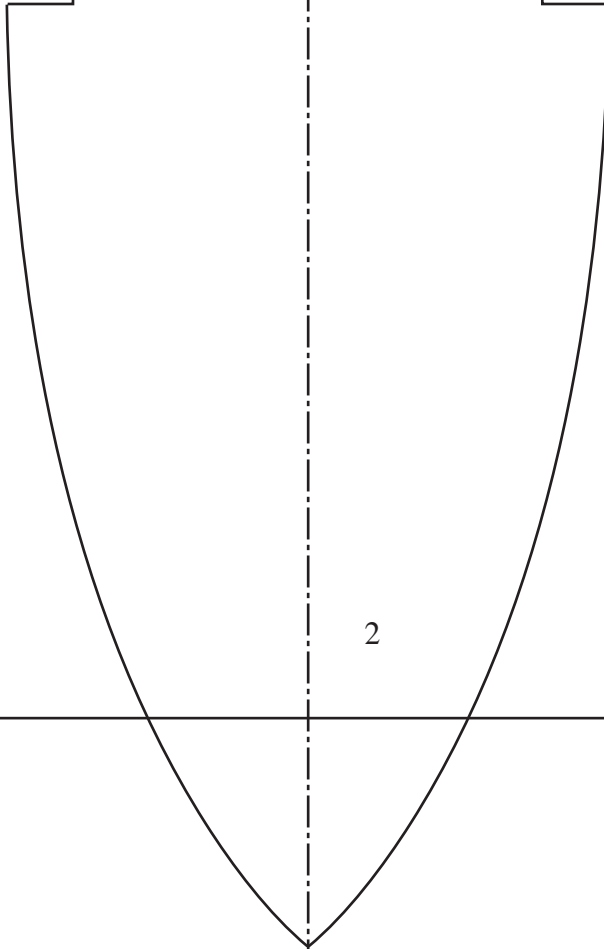
DATUM

1

Waterline



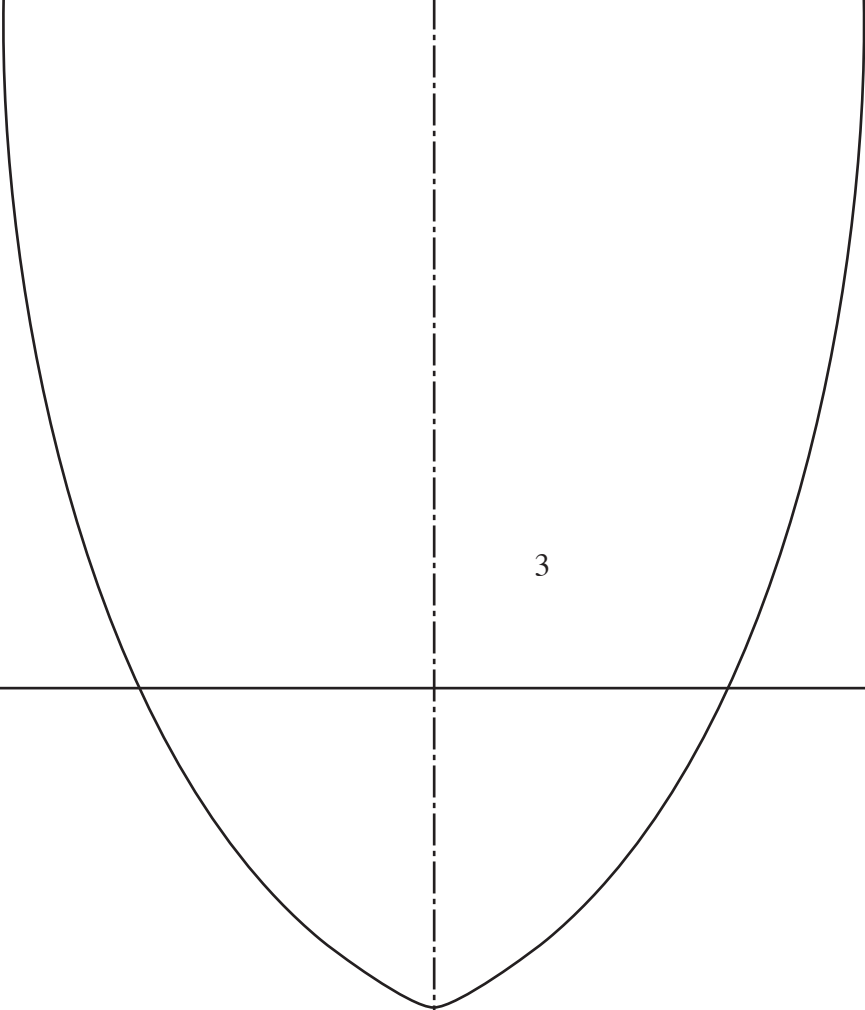
DATUM



2

Waterline

DATUM



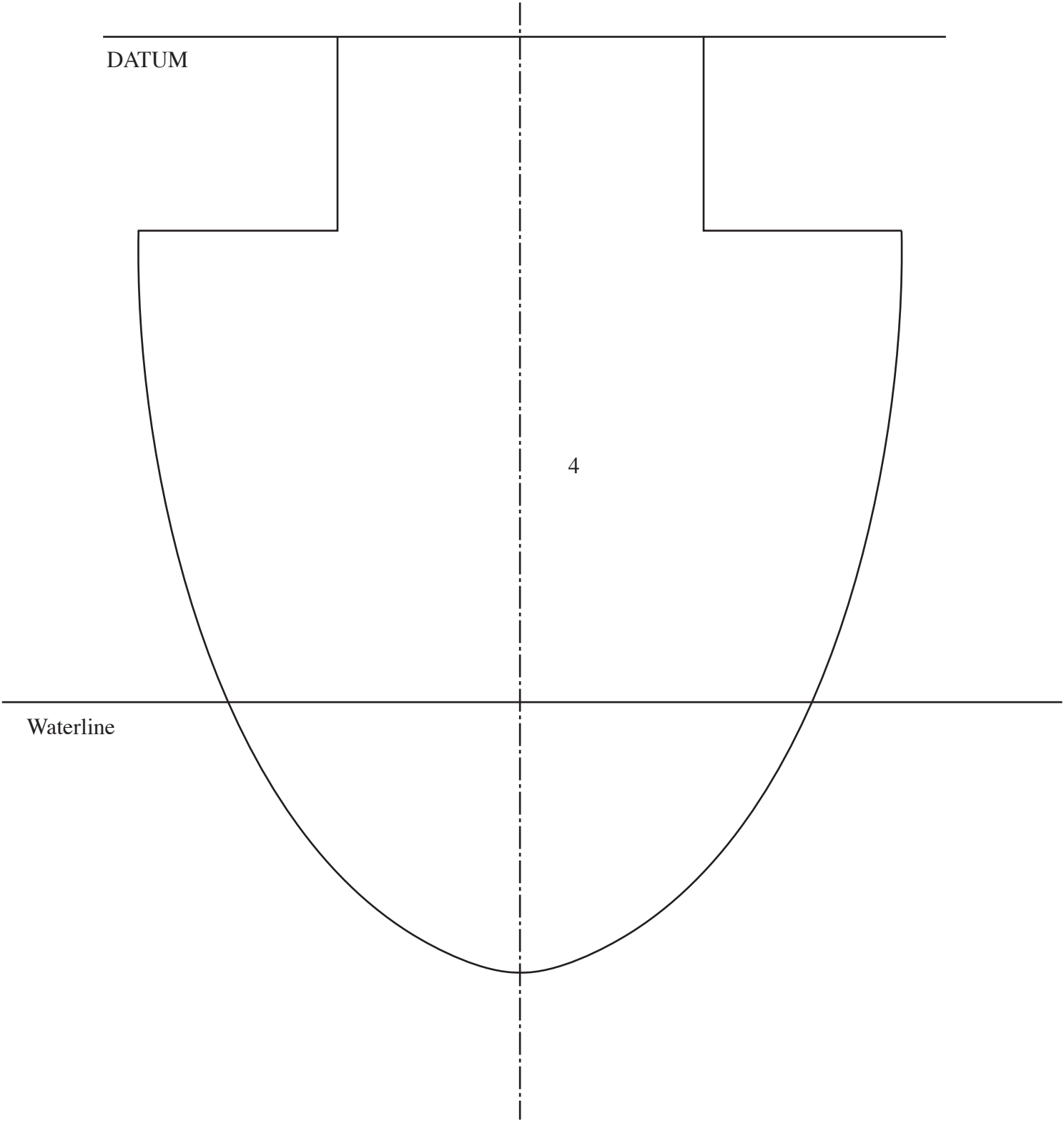
3

Waterline

DATUM

4

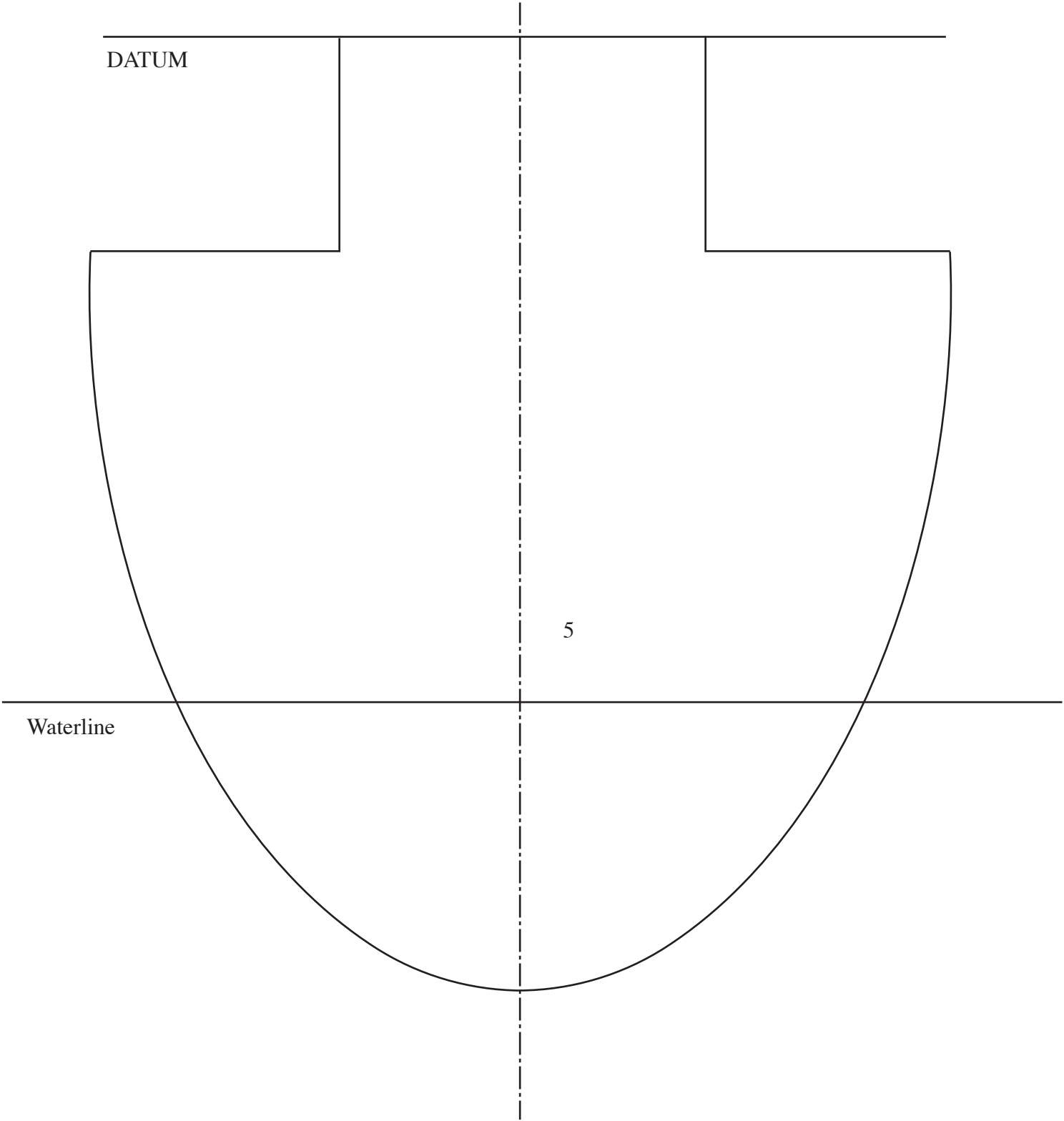
Waterline



DATUM

5

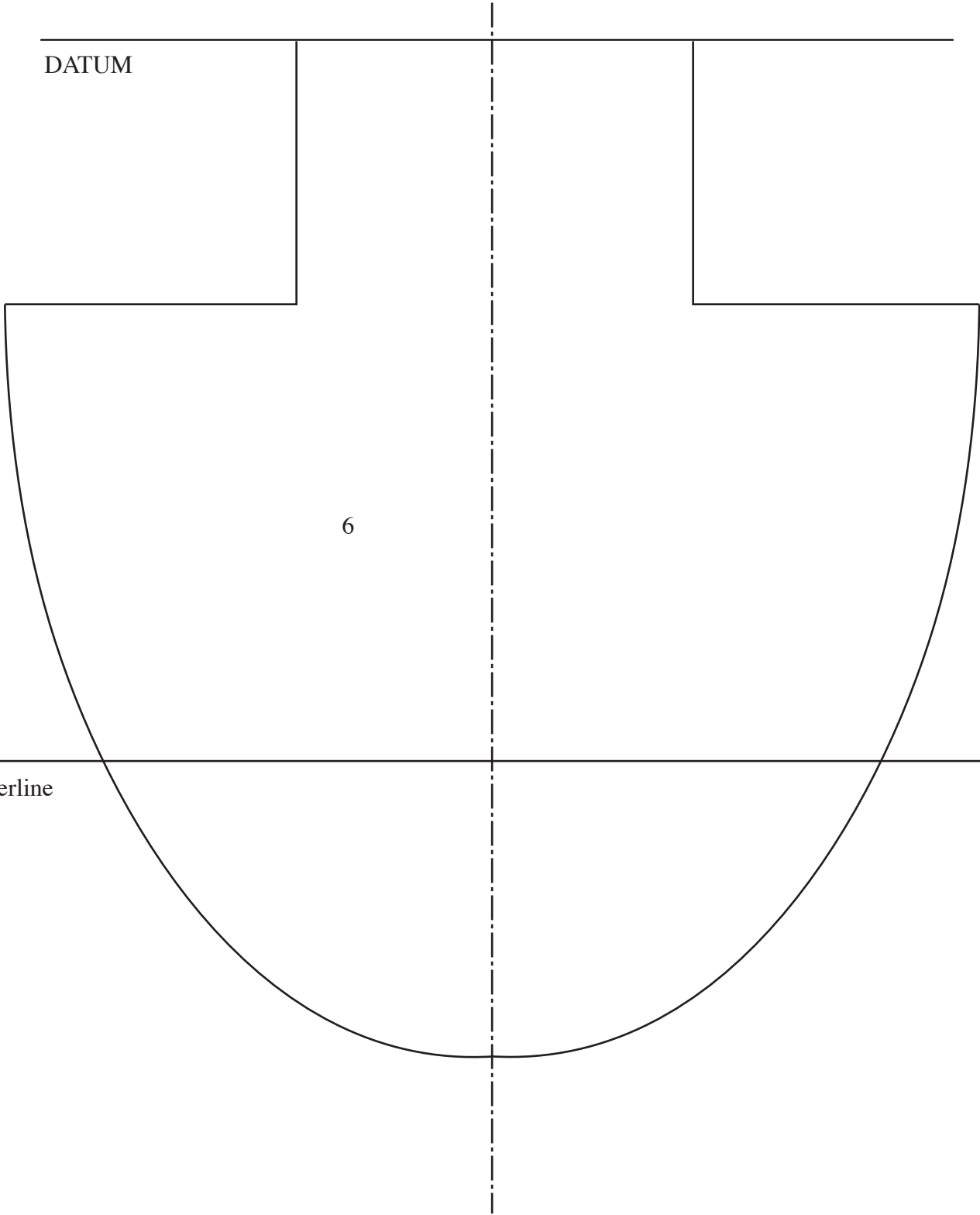
Waterline



DATUM

6

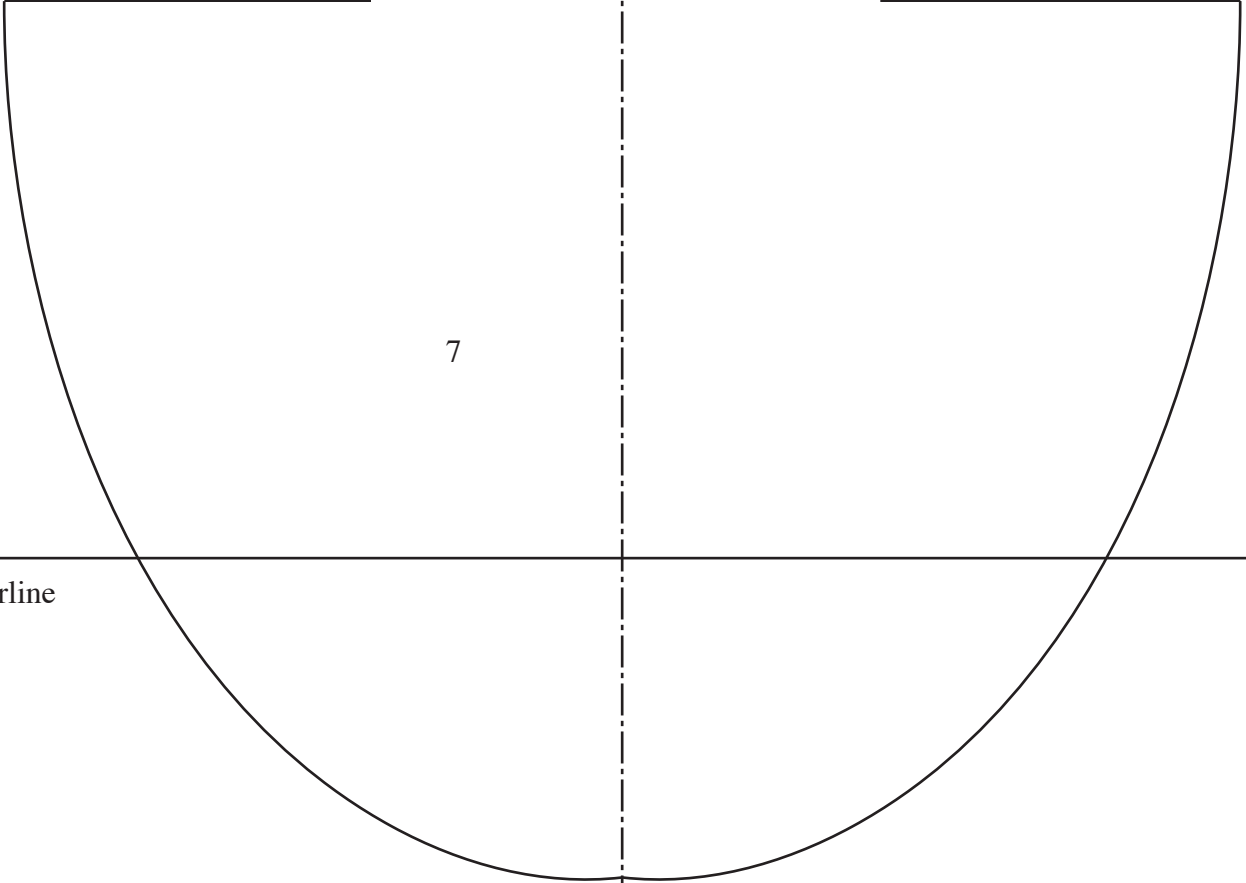
Waterline



DATUM

7

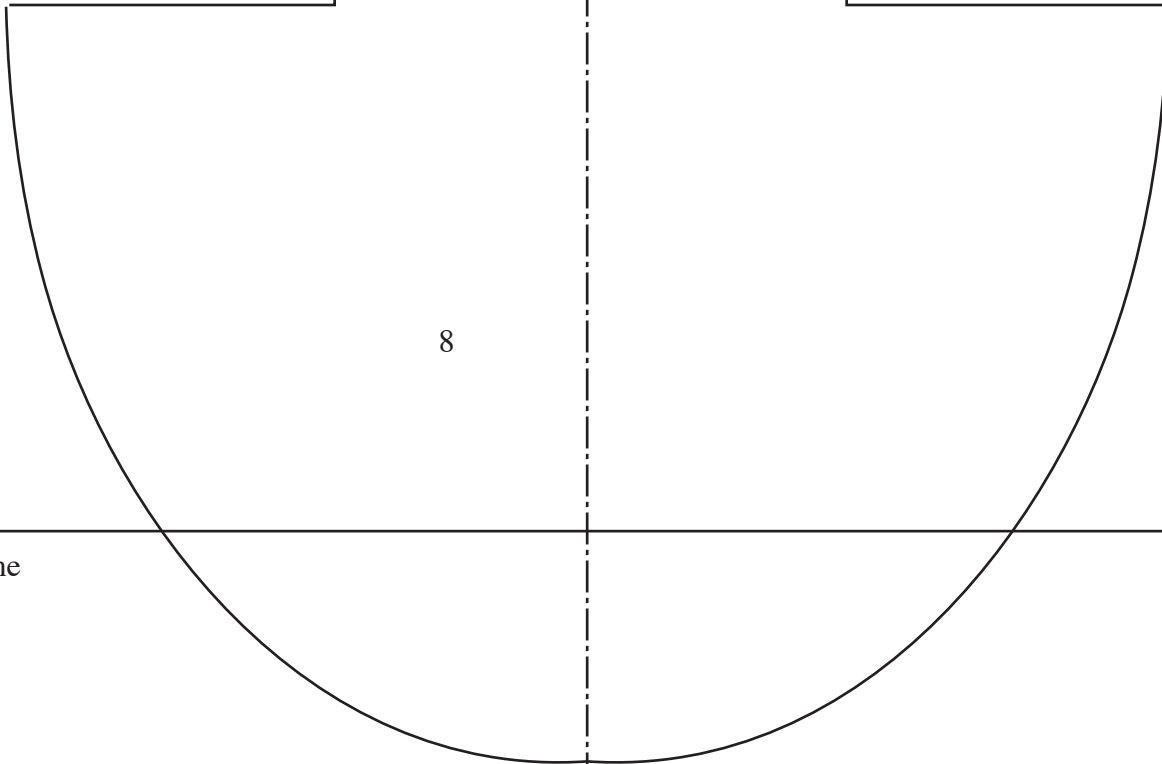
Waterline

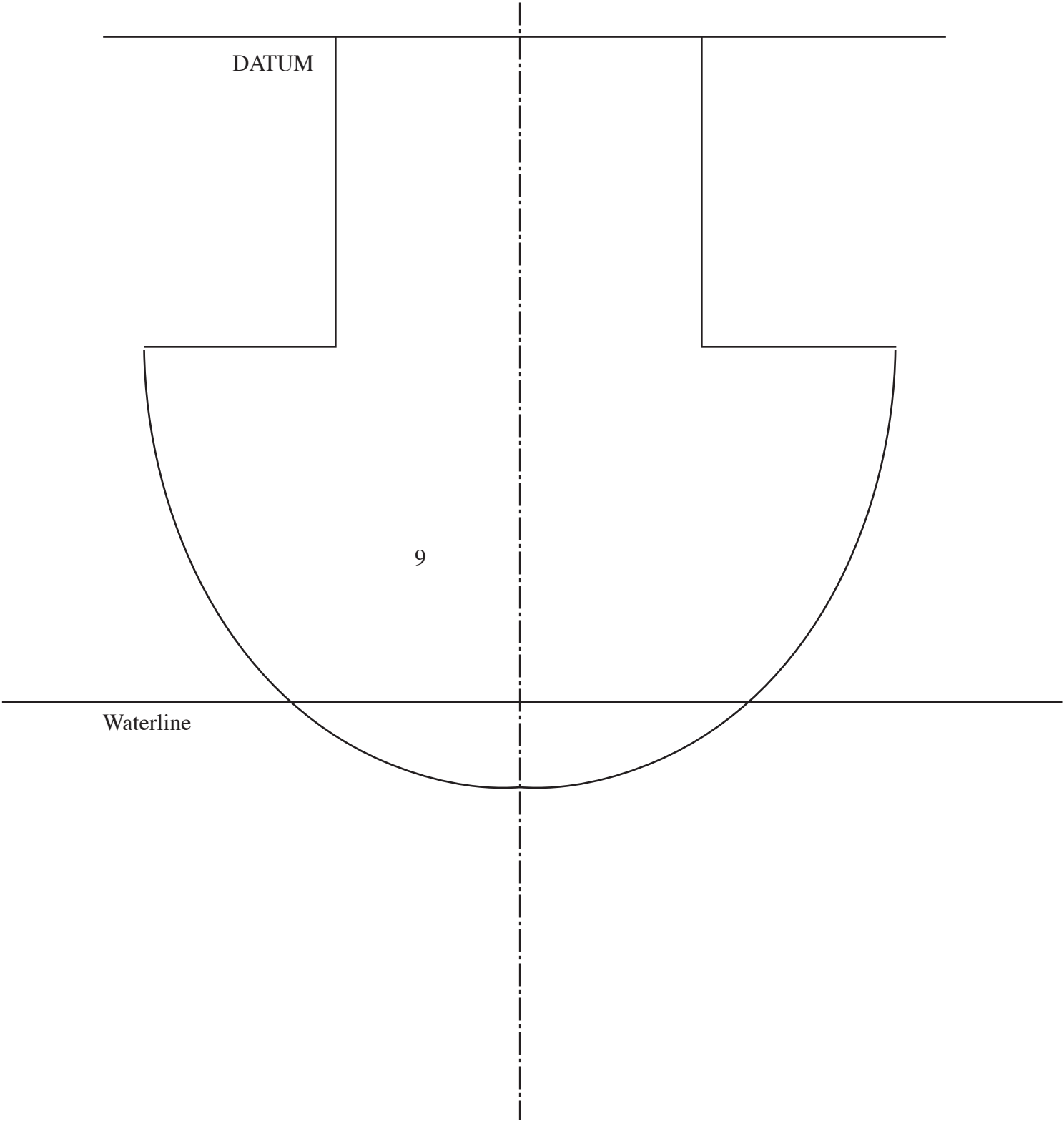


DATUM

8

Waterline



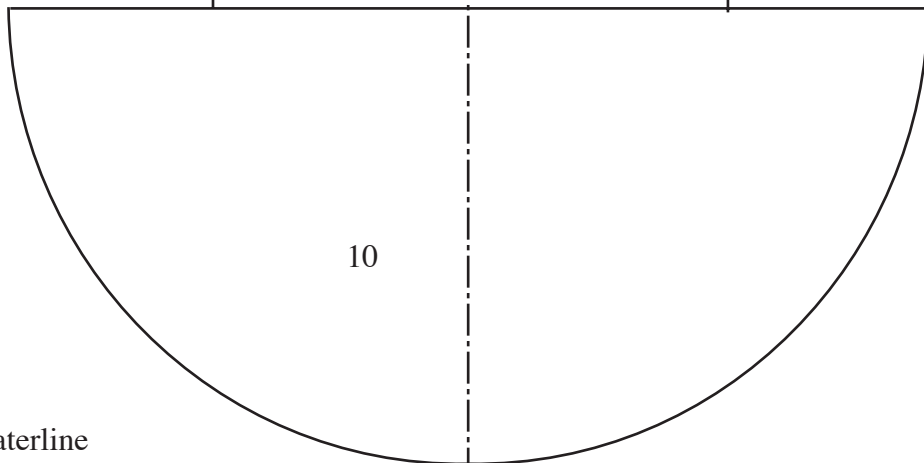


DATUM

9

Waterline

Datum



10

Waterline